

Hard Times

Greg Paul Stone [APRA]

Intro

E G#7 A E/G# F#m7 E/G# A Am E D



A1, A2

G D6/F# Em D C G/B Am7 D



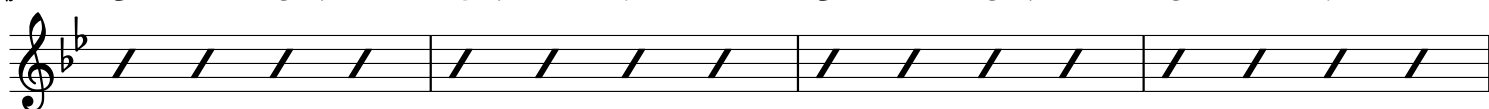
10 G B7 C G/B Am7 G/B C Cm G F



To Coda

B1

Bb Gm Cm7 F7 Bb Gm Gb F



19 Bb Gm Cm7 F7 Bb Gm Eb D7



D.S. al Coda

Solo

23 Eb Bb6/D Cm Bb Ab Eb/G Fm7 Bb



27 Eb G7 Ab Eb/G Fm7 Eb/G Ab Abm Eb F



32 **B2** B \flat G mi C $\text{mi}7$ F7 *Hard Times* B \flat G mi G \flat F

36 B \flat G mi C $\text{mi}7$ F7 B \flat G mi E \flat D7

A3 40 G D 6 /F \sharp E mi D C G/B A $\text{mi}7$ D

44 G B7 C G/B A $\text{mi}7$ G/B C C mi

48 G D 6 /F \sharp E mi D C C mi G